

WELCOME TO



M T P ENGINEERING

เอ็ม ที พี เอ็นจิเนียริ่ง

บริษัท เอ็ม ที พี เอ็นจิเนียริ่ง จำกัด 216 หมู่ 7 ต.หนองขาม อ.ศรีราชา จ.ชลบุรี 20110 ,

Tel : 038-066474 , 061-1966696 , Fax : 038-066462

E-mail : tanin_mtp1@hotmail.com



Company Profile



General Profiles

MTP Plant

- Establishment** : 2004
- Plant Location** : 216 M.7 Nongkham, Siracha Chon Buri District
- Register capital** : 2 MB
- Shareholder** : 100% Thai
- Plant Area** : Land = 24,000 m² (15 rai)
- Employee** : 50 persons (Qct 2019)





Staff Assignment

1) Managing Director	1
2) Designer & Cad Cam	5
3) Machine Operator	35
4) Finisher & Assembly	5
5) Official & QC & Logistic	7
<u>Total Employee</u>	<u>53</u>



Products Process



มรรฐ
ORDER

Wp-mk-xx-001

วางแผน
การผลิต

Wp-pl-xx-001

สั่งซื้อ
วัตถุดิบ

Wp-pl-xx-002

ทำมรผลิต

Wp-pc-ml-001

Wp-pc - lt -001

Wp-pc-wd-001



เตรียมส่ง
ลูกค้า

Wp-pl-xx-004

บรรจุ
หีบห่อ

Wp-pl-xx-003

ตรวจสอบ
คุณภาพ

Wp-qa-xx-001



CNC Machine



CNC VM-76R
→ OKK
= 1 MACHINE
1540 X 760 X 660



DUBLE COULUM
→ HARTFORD
= 1 MACHINE
2000 X 1750 X 750



CNC H320
→ BRIDGEPORT
= 2 MACHINE
320X 320 / 400x400

CNC GX-1600
→ BRIDGEPORT
= 1 MACHINE
1600 X 700 X 635





CNC Machine



CNC NVM-1166
→ **MAXMILL**
= 2 MACHINE
1200 X 850 X 750



CNC_YMZ850
→ **YAMAZAKI**
= 4 MACHINE
800 X 500 X 450



CNC
→ **AKIRA PERFORMA**
= 1 MACHINE
760 X 400 X 440



CNC Machine



**CNC_S500X1
→ BROTHER
= 7 MACHINE
550 X 400 X 400**



**CNC
→ MORI SEIKI MT2000
= 1 MACHINE**



**CNC_S1000X1
→ BROTHER
= 1 MACHINE
600 X 500 X 450**



CNC Machine



**HORIZONTAL DRILLING
MACHINE → MAKINO
MC2213
= 1 MACHINE
X2000
Y1000
Z1000**





CNC Machine



EDM_SD350
→ SUPER DRILL
= 1 MACHINE
350 X 300



EDM_znc-430
= 1 MACHINE



WIRE CUT_FA10S
→ MITSUBISHI
ADVANCE
= 1 MACHINE
350 X 250 X 200



Lathe Machine



CNC LATHE GSL-200M
→ GOODWAY
= 2 MACHINE
Machining Cap \varnothing 500 X 1100



CNC LATHE
OKUMA LH35N
= 1 MACHINE
Machining Cap \varnothing 300 X 3000



CNC LATHE
TAKAMAZ GSL-15
= 1 MACHINE
Machining Cap \varnothing 300 X 200



Lathe Machine & Grinding



LATHE MANUAL
-CHINHUNG
-LA
= 2 STATION
430 X 1000

GRINDING เจียรใน กลม

- TOYOSO-KENT
- SHIGIYA SEIKI
- TOYODA

= 3 MACHINE
Machining Cap Ø300 X 1500



GRINDING เจียรใน ราบ
- OKAMOTO
= 1 MACHINE
600 X 400 X 200



Lathe Machine & Grinding



CNC LATHE GSL-200M
→ GOODWAY
= 3 MACHINE
Machining Cap Ø500 X 1100





Weld Robot & Inspection Machine



OTC DAIDING Welding Robot
= 1 MACHINE



CIM CORE CA-7520
= 1 MACHINE
1200 X 750 X 700



TAPPING MACHINE M3-M16
= 1 MACHINE
1000mm



CMM
→ ZEISS CALYPSO
= 1 MACHINE
1200 X 750 X 700





Weld Robot & Inspection Machine



MITUTOYO PJ-A3000
= 1 MACHINE



KEYENCE IM-7000
= 1 MACHINE



SURFACE ROUGHNESS : SJ-210
MITUTOYO = 1 MACHINE



MITUTOYO CONTRACER CV-3200
= 1 MACHINE

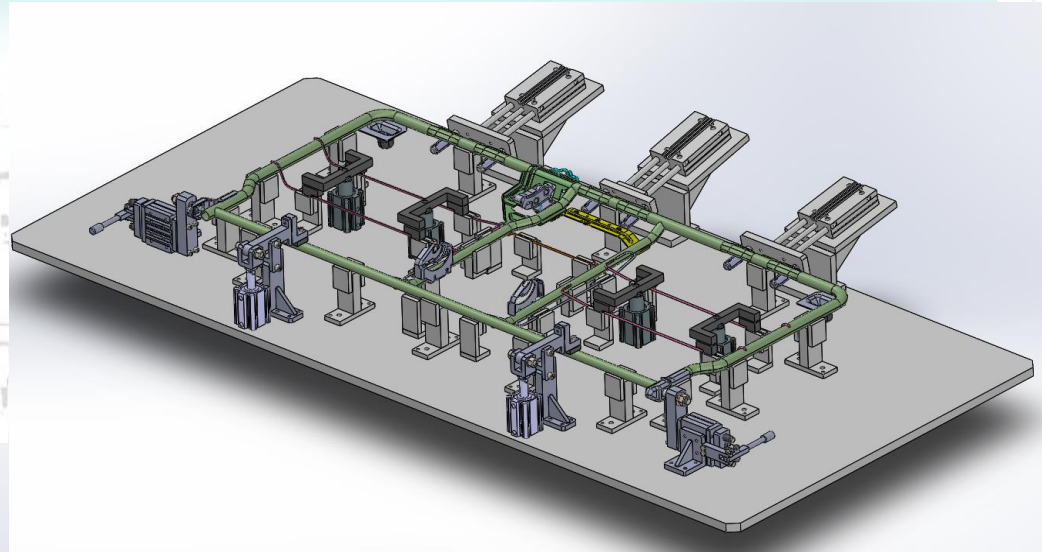


SAMPLE JIG ASSY GROUP SEAT CAR

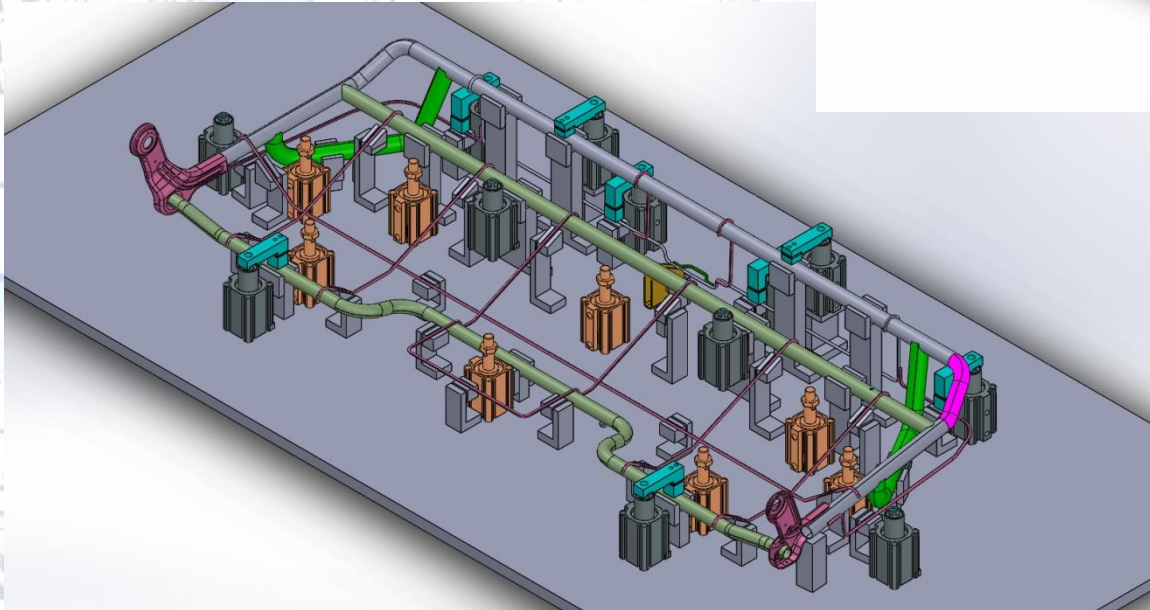
ADIANT



▪ Backrest Seat Assy



▪ Main Backrest Seat Assy





JIG FRAME SEAT

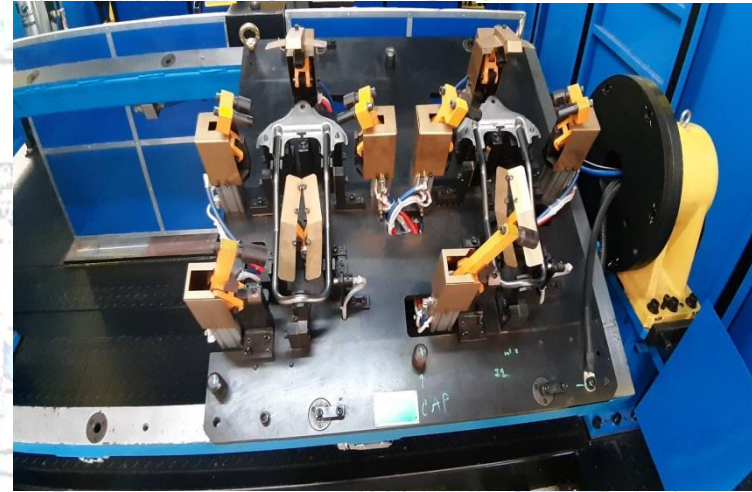
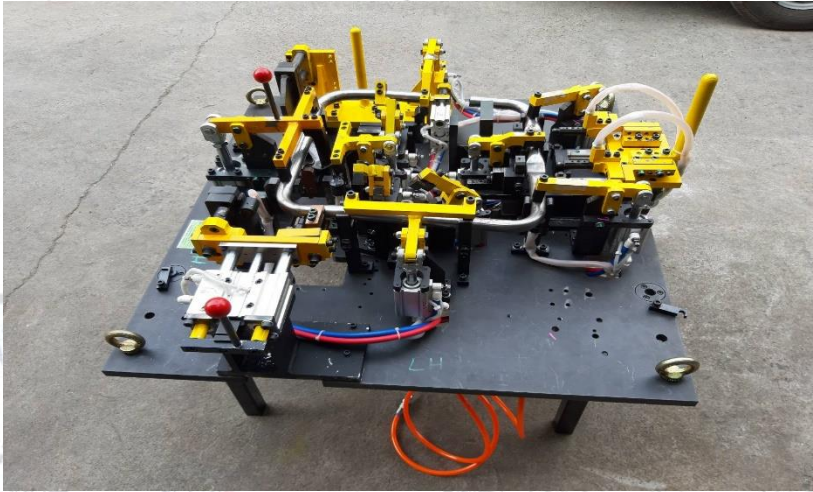
- JIG ASSY SINGLE SEAT
- MAIN BODY SEAT JIG





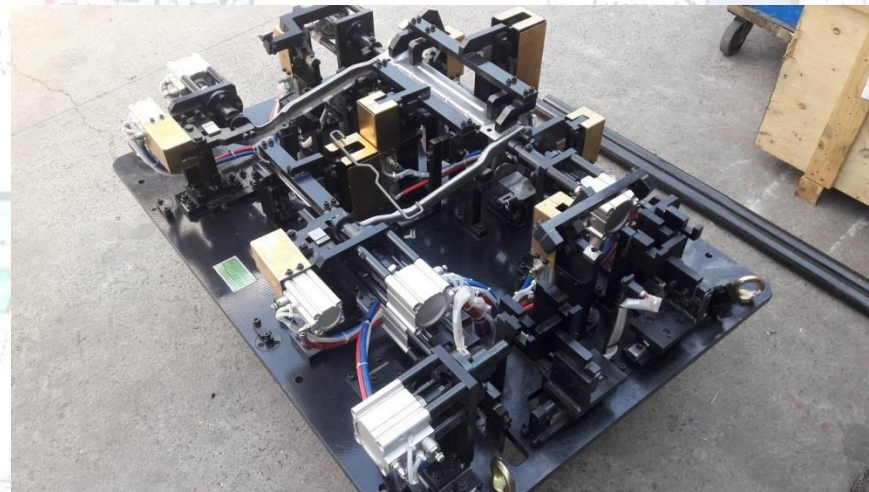
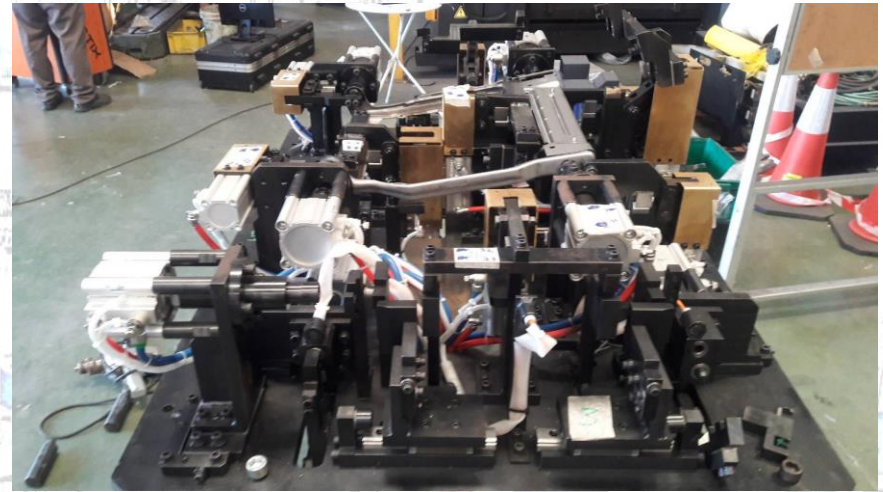
WELDING & SPOT JIG

ADIANT





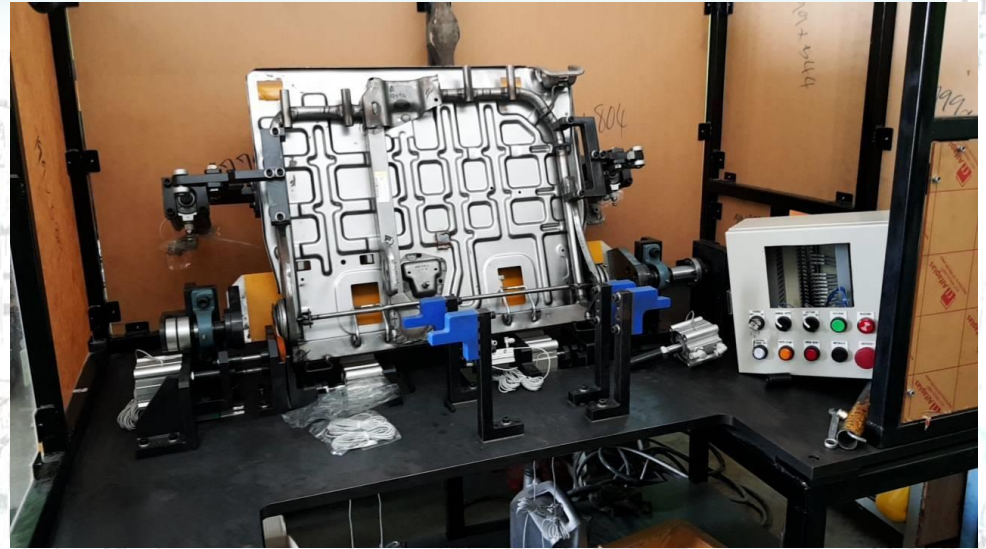
WELDING & SPOT JIG



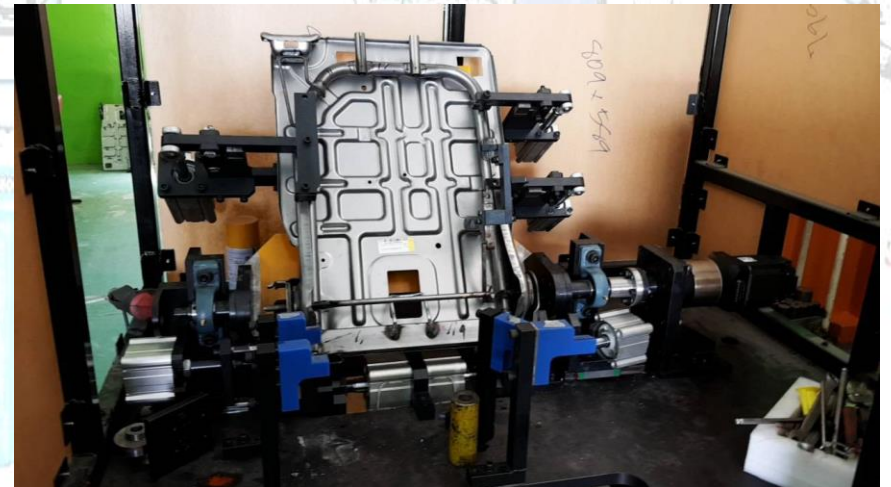
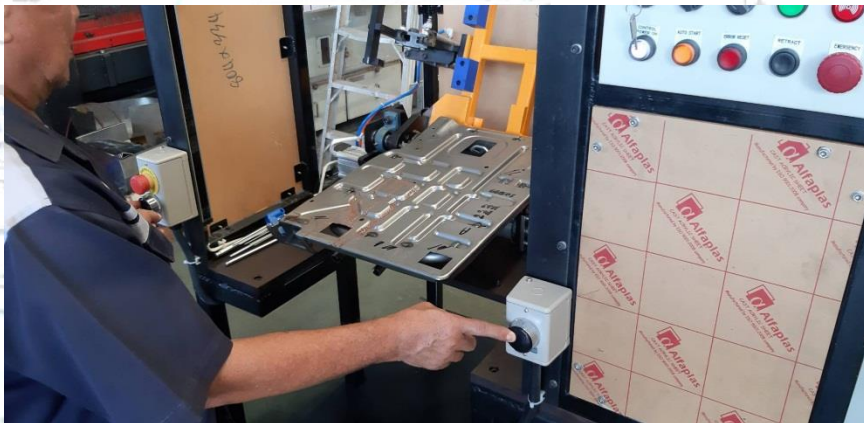
ADIANT



WELDING & SPOT JIG

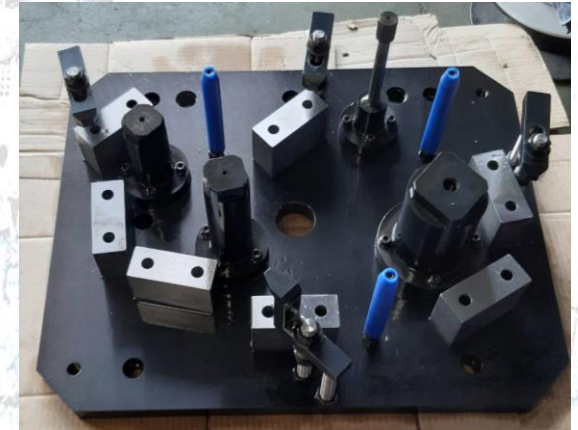
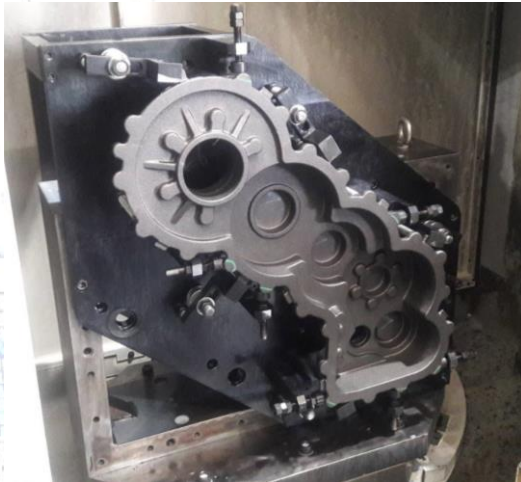


ADIANT

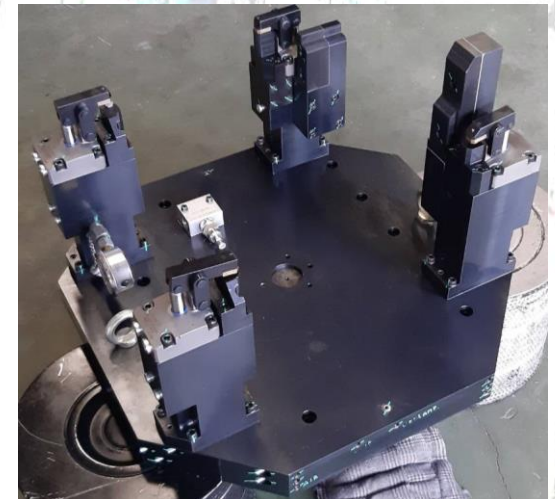
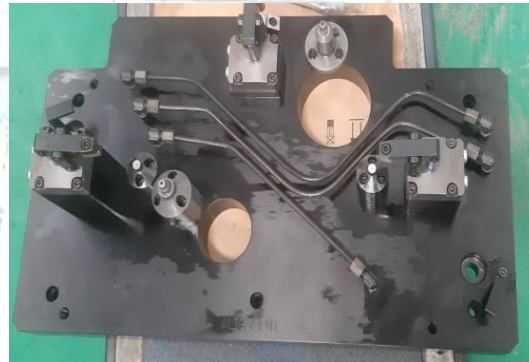




JIG MACHINE & WELDING & SPOT JIG



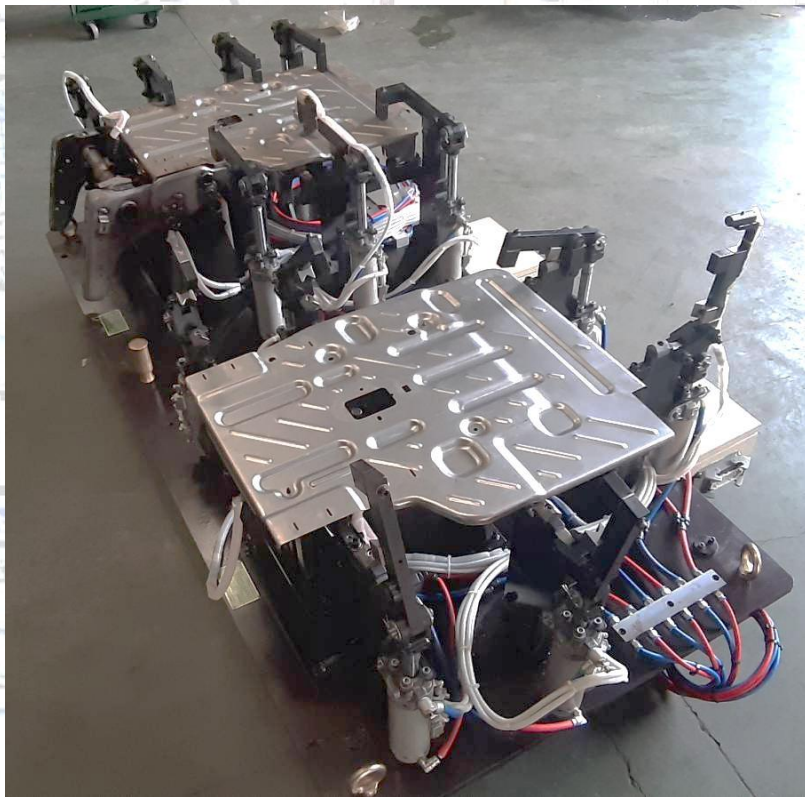
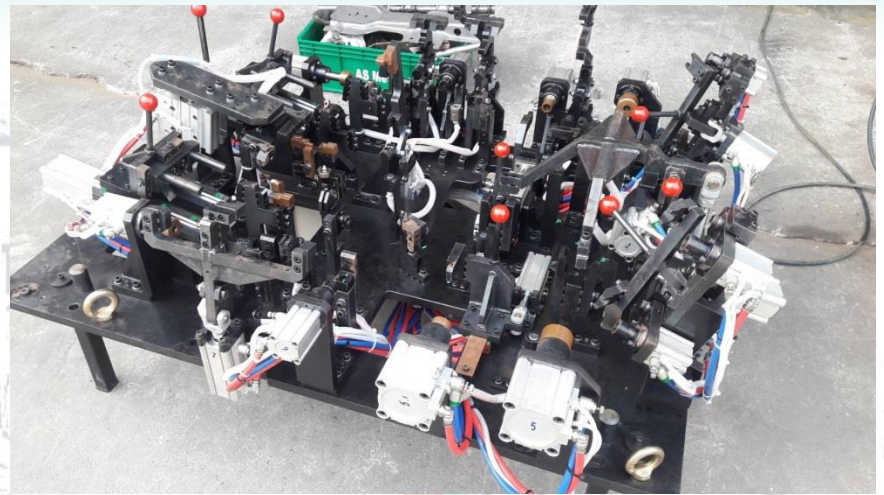
ADIANT





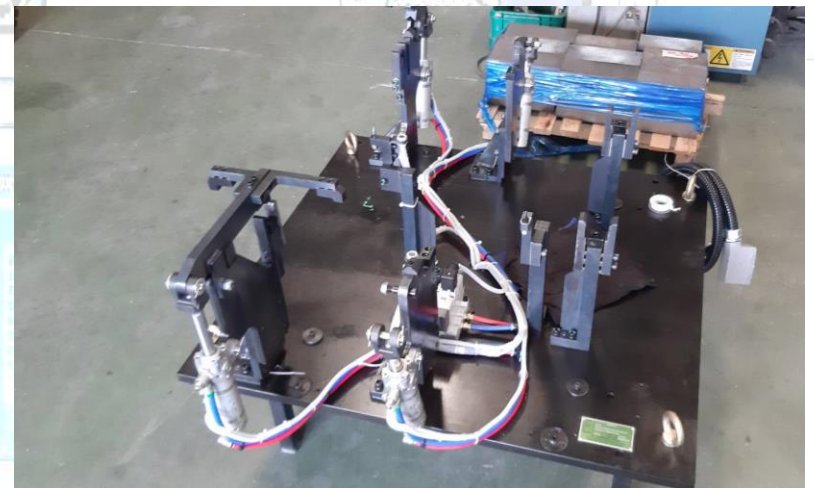
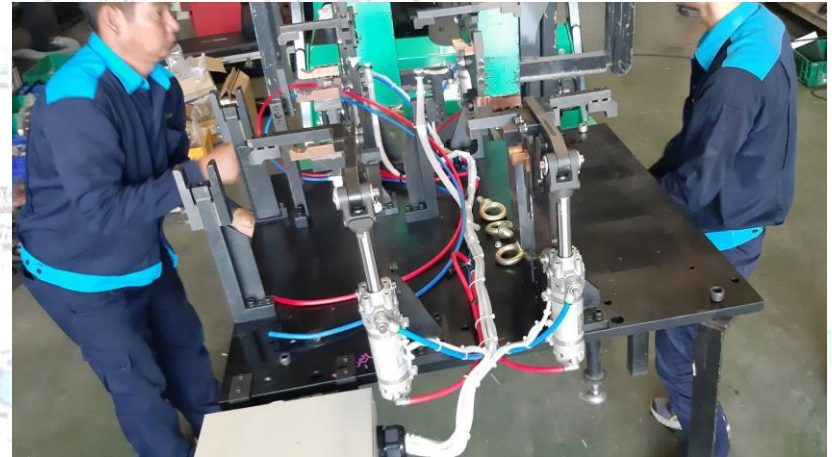
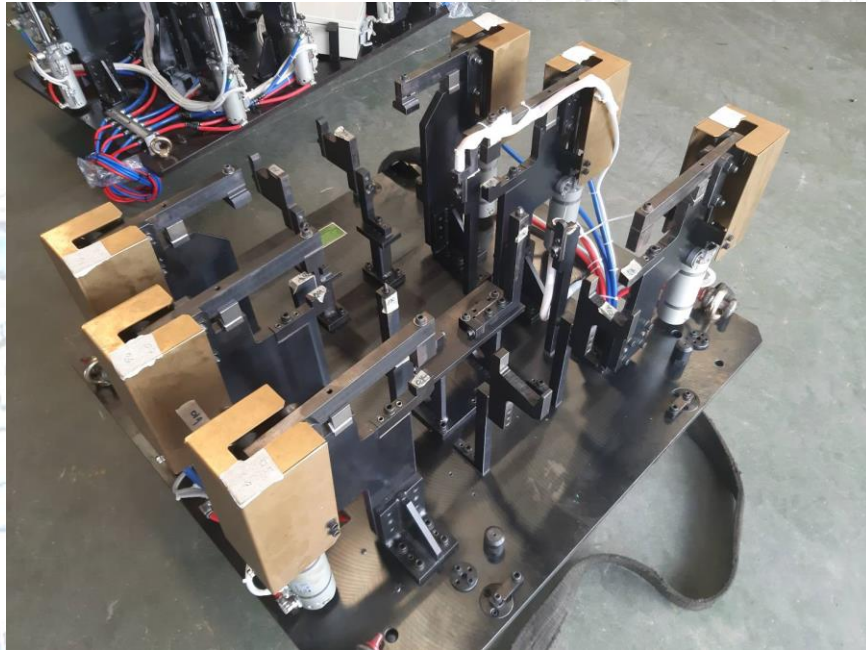
WELDING & SPOT JIG

ADIENT





WELDING & SPOT JIG

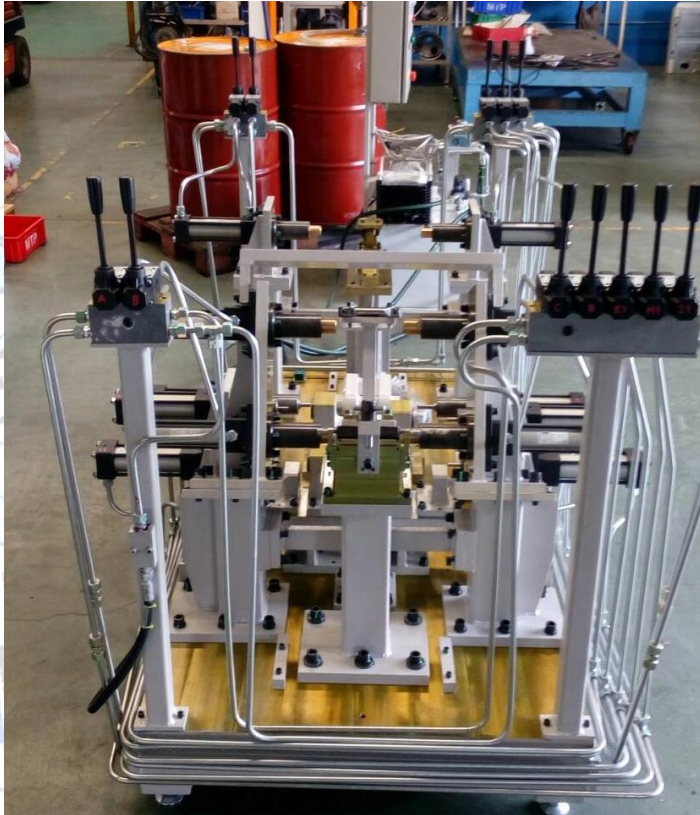


ADIENT



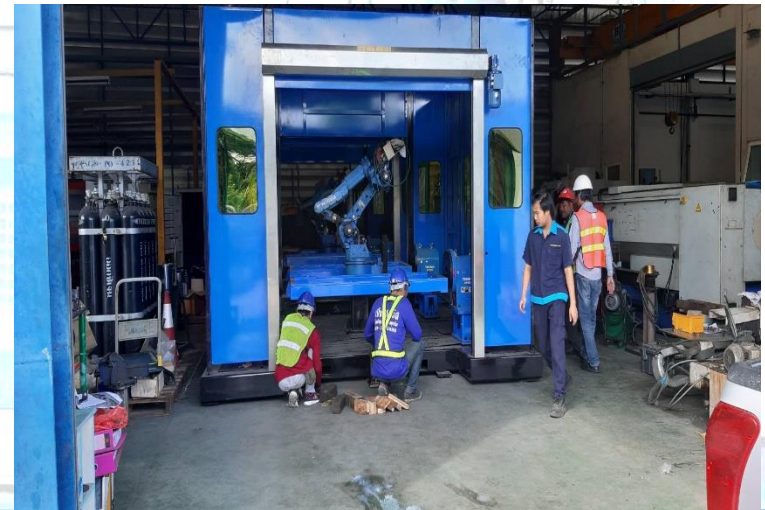
JIG ASSEMBLY

ADIANT





ROBOT CELL



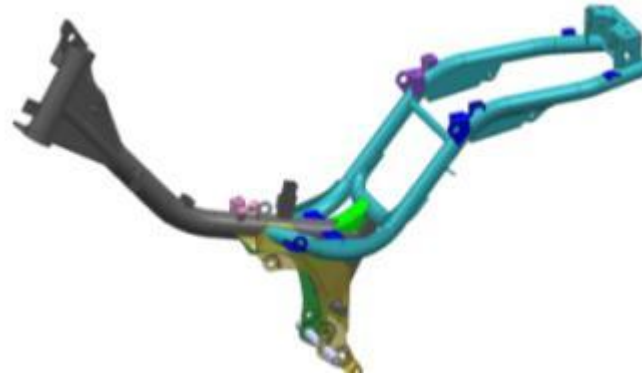


WATER LAEK TEST





JIG FRAME COMP



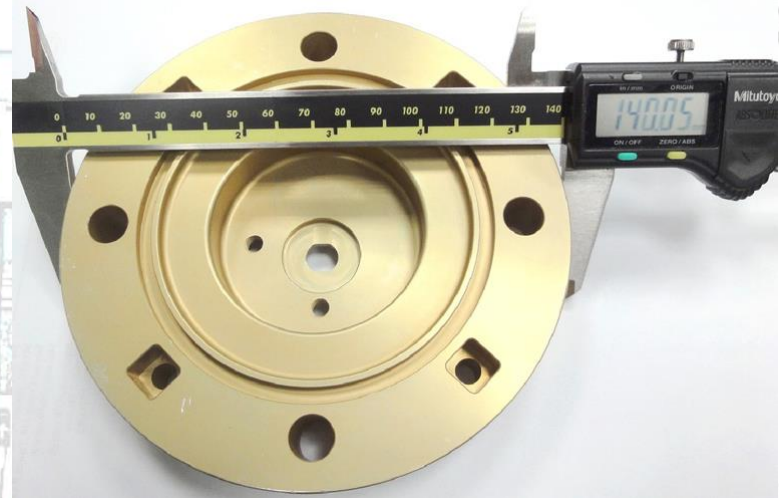
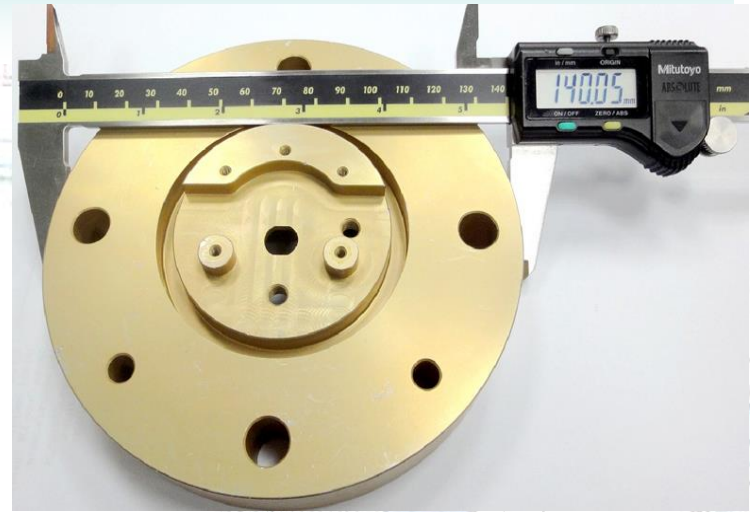


Sample Group Product Machine





Sample Group Product Machine





Customers and Products



FC



Drum Brake



Disc Brake



Exhaust
Manifold

FCD



Camshaft



BRIDGESTONE

FCD



FC



Drum Brake

FCD



Hub Front/Rear

FC



Disk Brake Drum Brake





Customers and Products



FCD



Carrier Gear



Bracket Injection Pump



FCD



HOUSING



FCD



Cylinder Disc Brake



FCD

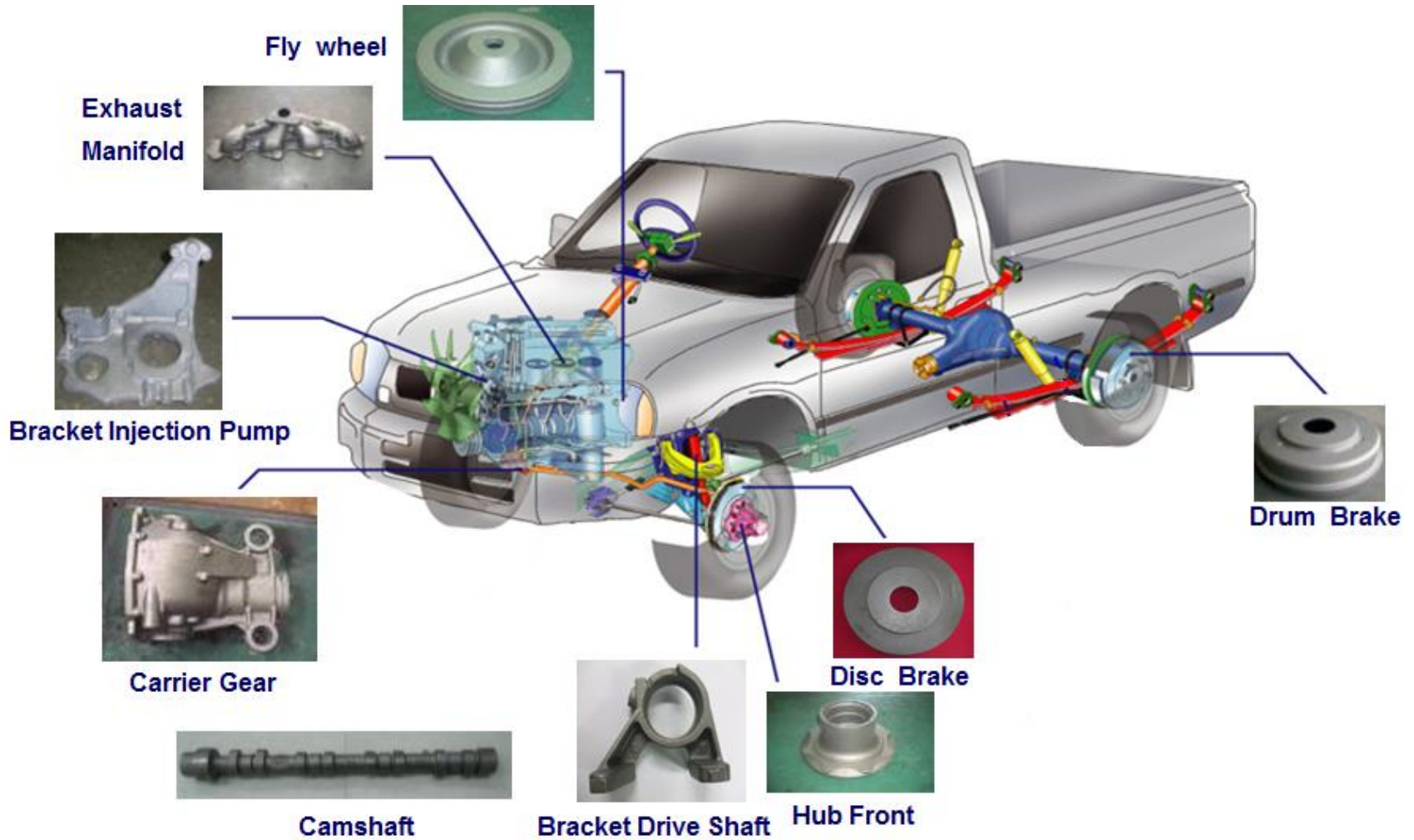


Spider





Vehicles Parts





Tractor Parts



CASE BEVEL GEAR



CASE FRONT GEAR



HOLDER FRONT



CASE FRONT AXLE



HOLDER REAR



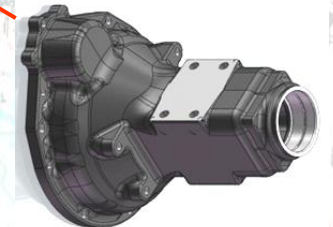
MANIFOLD EXHAUST



CASE HYD. CYLINDER



CASE BRAKE



CASE REAR



Combine Parts





Customers and Products



TBKK

FCD



Bracket Anchor

FCD



Fly wheel

FC



Fly wheel

FC



Case RR



Case Hydraulic Cylinder

FCD

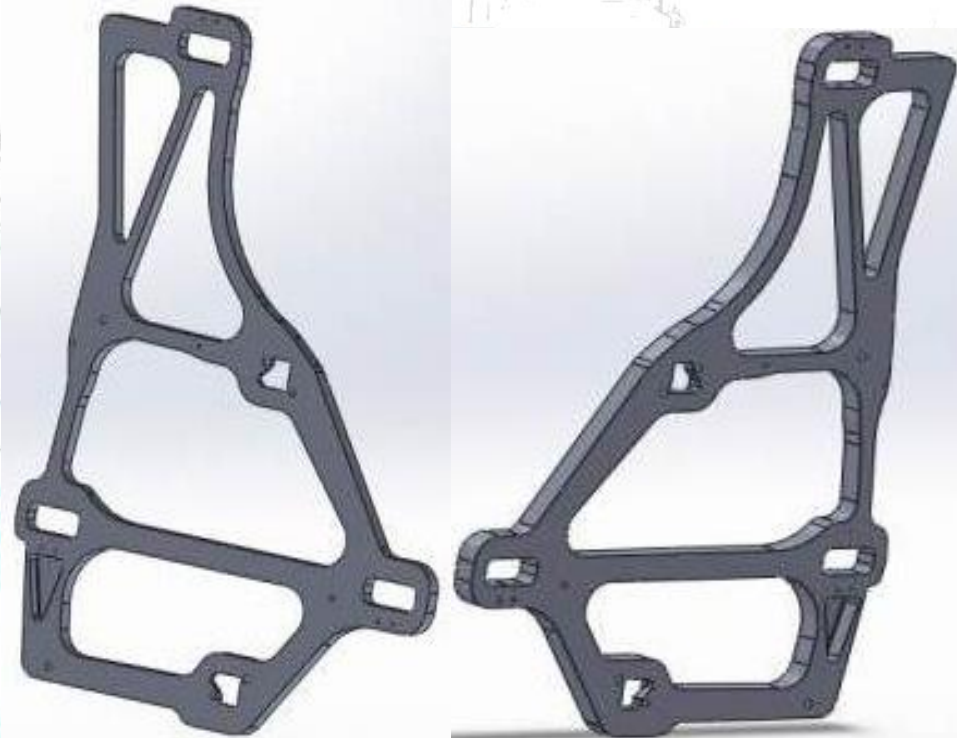




Group Seat Aero (Mat'l Al)



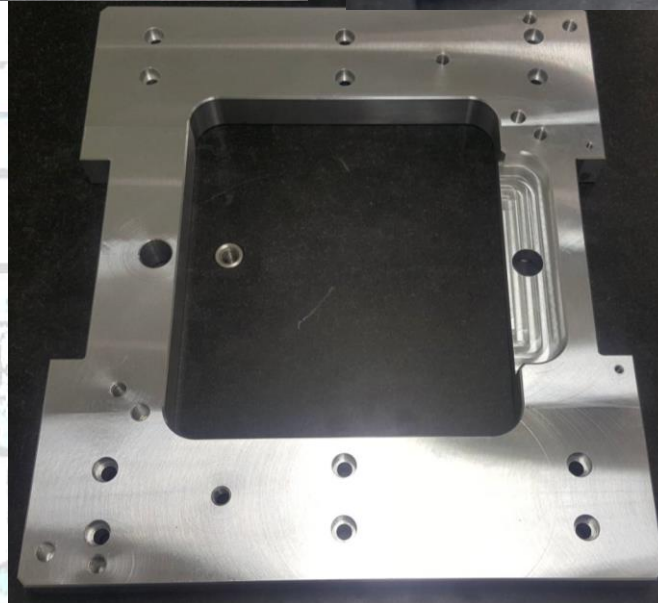
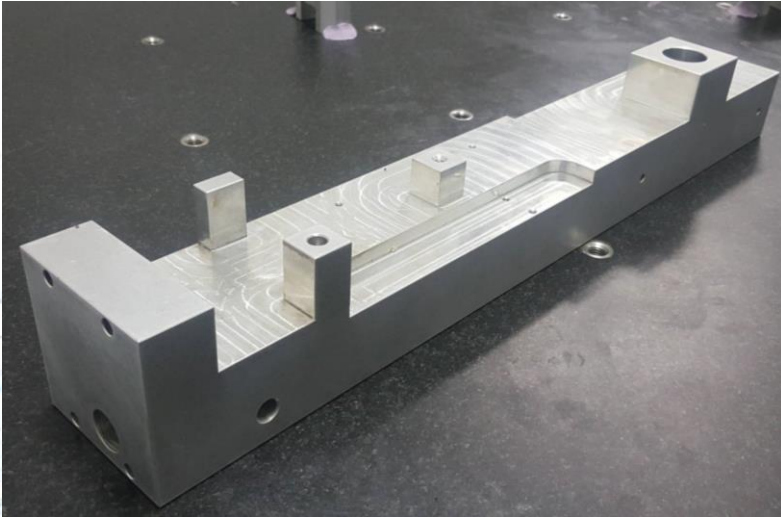
- ADAPTOR ASSY SEAT



- ADAPTOR ASSY SEAT



Group Precision Part (Mat'l Al)





MAP

